

*I Am....*



**VILLAGE NORTHWEST UNLIMITED**  
2016 ANNUAL REPORT

*“I AM  
are the two  
most powerful words,  
for what you  
put after them  
shapes  
your reality.”*

- Unknown

**Village Northwest Unlimited**  
330 Village Circle . Sheldon, IA 51201  
Ph. (712)324-4873 . Fax (712)324-4877  
[www.villagenorthwest.org](http://www.villagenorthwest.org)

# *Table of* **Contents**

<i>02</i>	List of Board & Cabinet Members	<i>16</i>	I Am...Eric Graves
<i>03</i>	Message from Chairperson of the Board Message from the CEO	<i>17</i>	I Am...Meagan Bonestroo
<i>04</i>	Mission of Village Northwest Unlimited	<i>18</i>	I Am...Leah Swanson
<i>05</i>	CARF Accreditation	<i>19</i>	I Am...Nicole Arens
<i>06</i>	Disability Employment Awareness	<i>20</i>	Programs at the Village
<i>07</i>	New ICF/ID Homes Anchor Employment Services Launched	<i>22</i>	Phil Grove Tribute
<i>08</i>	Financial Report	<i>23</i>	VNU Businesses
<i>10</i>	I Am...An Employer	<i>24</i>	Volunteers
<i>11</i>	I Am...An Employee	<i>25</i>	Donors
<i>12</i>	Year in Pictures	<i>32</i>	Gifts in Memory
<i>14</i>	Special Olympics	<i>33</i>	Ways to Give







**PAM THORNTON**  
Chairperson of the Board

## *I am a* **Board Member**

*A Letter from the Chairperson of the Board*

I Am... chairperson of the board, but that is such a very small cog in the wheel here at Village Northwest Unlimited because of the awesome Cabinet we have. I'd like to tell you of the "I Am's..." that have led me to this place.

I Am... a learner. When I was first asked to run for this board, I knew there would be a huge learning curve involved. I was not mistaken. Every job has its own language and it took me a couple of years to learn all the acronyms and the lingo used in the VNU world. Things are always changing and so provide an avenue for learning and adjustments at every curve. When I was a special education teacher, a preschool teacher, and later in the classroom, there were always new things to learn and implement. I think one reason I wanted to be on this board is that there are people from all walks of life and they each bring so much to the table. We learn from one another all the time.

I Am... an advocate. I have lived in this area for over 35 years and am SO glad to have raised our children in the environment where VNU residents are truly a visible part of the community. Thus it has always been a natural part of their lives to include all members of society and is evident in their career choices.

One of my first personal encounters with VNU in the late 1970's was my church circle adopting a couple of ladies to bring to events and remember in special ways. I often still see one of these special ladies when I visit the campus and can be assured of a big hug!

The more I learn, the more I realize that I will ALWAYS be an advocate for VNU. This is by far the most important role all of us can be for VNU, whether it be through our gifts of time and money, or by spreading the good word of things that happen here. Let's all join together and be lifelong advocates for something we know is the right thing to do! Thanks to ALL of YOU for being an advocate.

Sincerely,  
Pam Thornton



**BARRY W. WHITSELL**  
President & CEO

## *I am a* **Voice for the Village**

*A Letter from the Chairperson of the Board*

This year's annual report is all about answering the question or the statement, I Am. I really like this because it is open-ended and allows the individual answering to define who they are through their own eyes. Often times in this day and age, others try to define who we are, which then impacts and limits our own thoughts as to who we are and who we can become as individuals. At the Village we want each of the 180 people we serve to achieve Purpose and Dignity in their lives by being able to define themselves.

One of the first steps in enabling a person to define who they are is to provide a continuum of options from which they can choose. It would be tough to say who I am without having various options to determine what I like and don't like, what I find fun and exciting, and what interests me and what does not. Providing choices and options from a full spectrum of services and programs is what makes it possible for each individual served at the Village to discover their uniqueness. As this happens, they can begin to define themselves as they answer, I Am...

As the President and CEO of the Village, I would define myself as "I Am...A Voice for the Village." I believe it is important in my role to ensure our programs and services are diverse and stimulating, and that they provide opportunities for individuals to explore and try new things as they pursue quality life styles. Each person needs to see themselves as a complete person and someone who is loved for who they are. I think we as a Village need to allow the people we serve to fully define "I Am..."

I hope as you read our annual report you begin to find answers for yourself - as a parent, guardian, volunteer, employee, donor or board member - as to who you are in your journey with us as a member of the Village family.

I Am...A Voice for the Village,

Barry W. Whitsell  
President and CEO

# Our Mission

Unlimited in our desire to provide Purpose, Privacy and Dignity for all people.

Annually, we survey residents, parents and guardians as a measurement of how we are doing in our mission of serving individuals at the Village.

## Top 3 Strengths

*As reported in the 2016 Parent/Guardian Survey*

- Respectful and caring staff
- Communication with families
- Community involvement

## Survey Ratings

*As reported in the 2016 Satisfaction Survey  
Rating scale: 1 (poor) to 5 (excellent)*





## **VNU Awarded Three-Year CARF Accreditation**

In October 2015, Village Northwest Unlimited announced that it has been accredited for another period of three years by CARF International (Commission on Accreditation of Rehabilitation Facilities) for its Community Employment Services - Employment Supports, Community Employment Services - Job Development, Community Housing, Community Integration, Employee Development Services, Organizational Employment Services, and Supported Living programs. CARF International is the accrediting body that establishes consumer-focused standards to help organizations measure and improve the quality of their programs and services.

This accreditation decision represents the highest level of accreditation that can be awarded to an organization and shows the organization's substantial conformance to the CARF standards. There are over 1,000 standards that Village Northwest Unlimited must meet or exceed to maintain CARF accreditation. An organization receiving a Three-Year Accreditation has put itself through a rigorous peer review process. It has demonstrated to a team of surveyors during an on-site visit, its commitment to offering programs and services that are measurable, accountable, and of the highest quality.

The CARF Survey Report included a list of 22 strengths as identified by the CARF survey team. The report stated, "Staff members embody the mission of the organization, demonstrating the desire to provide purpose, privacy, and dignity for persons served in each interaction. Coaches and others working directly with persons served receiving vocational services are patient, encouraging, and respectful as they provide training and job supports."



# *I am* More than My Disability

*VNU in the Headlines*

## Disability Employment Awareness Month

October is National Disability Employment Awareness Month and in conjunction with that, VNU asked the City Council of Sheldon, IA to approve a proclamation establishing October 2015 as Disability Employment Awareness Month in Sheldon, IA. This was part of an annual awareness campaign that takes place each October. The purpose of National Disability Employment Awareness Month is to educate about disability employment issues and celebrate the many and varied contributions of America's workers with disabilities.

The history of National Disability Employment Awareness Month traces back to 1945, when Congress enacted a law declaring the first week in October each year "National Employ the Physically Handicapped Week." In 1962, the word "physically" was removed to acknowledge the employment needs and contributions of individuals with all types of disabilities. In 1988, Congress expanded the week to a month and changed the name to National Disability Employment Awareness Month.

Northwest Enterprises and Futures, vocational divisions of Village Northwest Unlimited, provide a supportive environment in which to teach vocational skills for adults with developmental and intellectual disabilities. The Village provides a variety of work options and functional training opportunities to assist individuals in achieving maximum employment. The Village has partnerships with over 40 local employers for either supported community

employment, competitive employment, or work center contracts. With over 40 individuals working in competitive employment placements and over 45 individuals working in supported employment, the Village is meeting its goal of providing the dignity of meaningful work for those who desire it.

"The Village is proud to be a part of National Disability Employment Awareness Month," said Barry Whitsell, CEO, Village Northwest Unlimited. "We want to spread the important message that we value the diverse perspectives, including those of individuals with disabilities. We work with local employers to ensure that people with intellectual and developmental disabilities are given every opportunity for success through competitive, integrated employment opportunities."





# New ICF/ID Homes Open in 2016

On Monday, June 20, 2016, a second group of 12 residents moved into two new campus homes after Phase II of plans to construct six new Intermediate Care Facility (ICF/ID) homes was complete. Members of the Sheldon community joined the Village for a ribbon cutting ceremony and open house on Friday, June 17, in a public celebration of the completion of the new homes.

The Village strives to provide quality residential, vocational and therapeutic services and to work as a team to develop plans and goals specific to each individual to allow them to be independent in their everyday lives. The new homes are specially designed with each person's unique challenges in mind. "For the most part, the homes are exactly the same as those built in Phase 1," says Barry Whitsell, Village CEO. "Only minor changes were made after our experience with the first phase." The homes feature a spacious living room and kitchen to foster a family-type setting. Each resident bedroom has a private bathroom and is equipped with track lifts to aid staff while lifting and transferring residents.

The new homes meet not only the needs of individuals served, but also the state codes for the ICF/ID level of care. The smaller 6-person home size follows an industry trend of having care settings that are smaller and more home like. "When we started this project, we believed that moving to a 6-person home environment would be advantageous for those we serve," says Whitsell. "This has proven to be true with a more intimate setting and a warm home environment."



When visiting with a resident's mother about her thoughts on the new homes, her excitement was evident. "The new homes are so nice. The kitchen is laid out so there is more space for people to cook meals. We also appreciate that each resident has the privacy of their own bathroom."

Eric, a Village resident, was a little more concise with his feedback when asked what he thinks of his new home. He says simply, "I like it."

When plans were originally announced in 2014, the board of directors approved a capital investment to launch a three-phase project to build six campus homes. Plans called for starting construction on phase 2 in 2017. Instead, we are ahead of schedule having completed phase 2 in June 2016.

## ANCHOR Employment Services Launched



**ANCHOR**  
Employment Services  
A Division of Village Northwest Unlimited

In July 2016, Village Northwest Unlimited named the employment services portion of the Village to better represent the services offered to both job seekers and area employers. Anchor Employment Services is a division of Village Northwest Unlimited that is focused on community based, integrated employment options for individuals who receive services from Village Northwest Unlimited. Anchor seeks to find competitive jobs in the community and offers on-going support for those desiring to work. Anchor Employment Services will evaluate skills and interests of the job seeker that match the needs of community employers.

Services offered include: discovery of skills and interests; worksite assessments and job shadowing; job placement; job coaching; customized employment, and job follow up.

Employers who are interested in more information should contact Emily Hoogland, Employment Specialist, at 712.324.2521 x4110 or [emilyh@villagenorthwest.org](mailto:emilyh@villagenorthwest.org)

# *Village Northwest Unlimited*

# Financial Rep

## REVENUE

Program Service Revenue	\$	13,620,587	90.0%
Business Ventures		785,522	5.2%
Other Operating Income		68,279	0.5%
Total Operating Revenue	\$	14,474,388	

## EXPENSES

Salaries	\$	8,587,535	60.0%
Employee Benefits		1,959,530	13.7%
Legacy Distributions		48,825	0.03%
Payroll Taxes		622,634	4.4%
Cost of Sales		222,672	1.6%
All other		2,861,409	20.0%

Total Operating Expenses	\$	14,302,605	
--------------------------	----	------------	--

Operating Income	\$	171,783	
------------------	----	---------	--

## OTHER INCOME

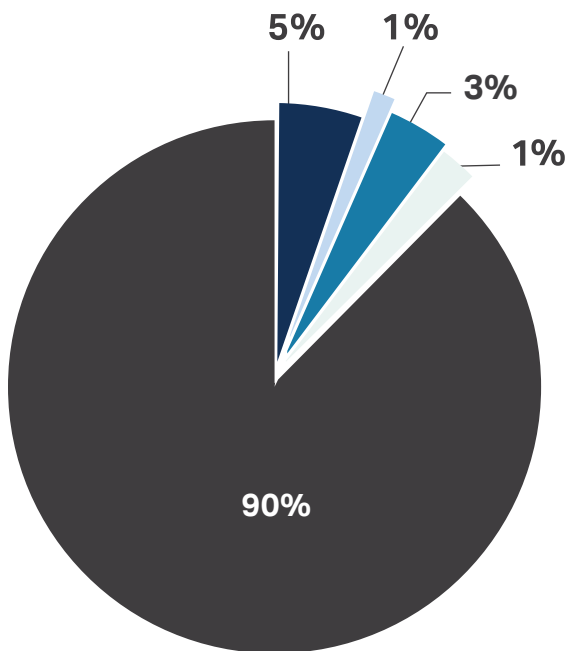
Contributions	\$	436,784	2.9%
Investment Income		217,265	1.4%

Total Operating Income	\$	654,049	
------------------------	----	---------	--

REVENUES IN EXCESS OF EXPENSES	\$	825,832	
-----------------------------------	----	---------	--

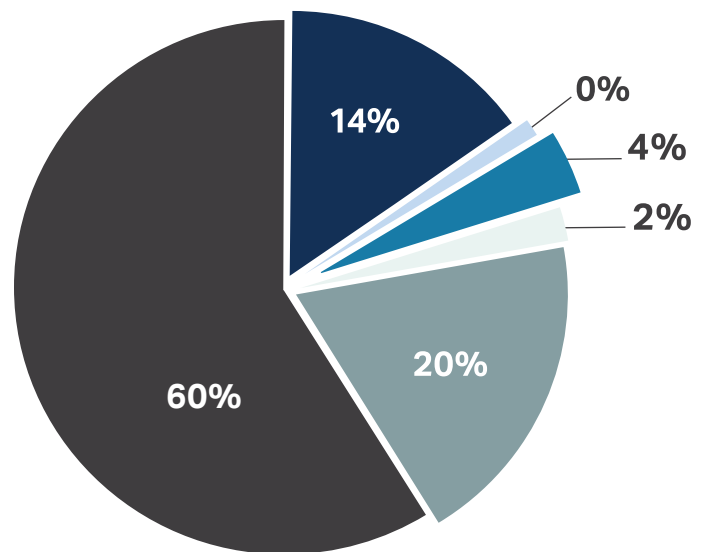
# Report

Statement of activities of Village Northwest Unlimited and VNU Foundation for the period ending June 30, 2016.



## REVENUE

- Program Service Revenue
- Business Ventures
- Other Operating Income
- Contributions
- Investment Income



## EXPENSES

- Salaries
- Employee Benefits
- Legacy Distributions
- Payroll Taxes
- Cost of Sales
- All Other

The information presented above is a summary of our Audited Financial Statements. A copy of the actual Audited Financial Statements are available upon request.



# *I am an* **Employer**



*Kirsten Poage, Pizza Ranch Manager*

"The Sheldon Pizza Ranch has really loved being able to have Village clients be part of our crew and also become part of our family. One of the most rewarding things is looking back and realizing how far they have progressed from their first day as an employee here. We have even had some of our guests mention how impressed they are with how far some of the clients have come and how much they enjoy interacting with them when they are dining with us. We have truly been blessed with the relationships we have been able to build with the clients that work with us and we look forward to partnering with the Village for many years to come!"

**Kirsten Poage, Manager**  
*Pizza Ranch – Sheldon, IA*



*Codey Christensen, Bomgaars*

"Shawn has been a great employee in our store for the last year. He has been helping customers and taking care of our pop machines. I think Shawn genuinely enjoys his job with us. I would encourage any business to take a chance on hiring someone of special needs. They can be a lot of fun. I enjoy talking with Shawn about football, especially Texas sports. I look for Shawn to help us do more in the new store when we move into it in the early spring of 2017."

**Codey Christensen**  
*Bomgaars – Sheldon, IA*

# *I am a* Valued Employee



**Name:** Bob Stewart  
**Employer:** KT Industries  
**Service:** 14 years  
 Bob likes the work he does and enjoys the people he works with.



**Name:** Shawn Todd  
**Employer:** Bomgaars - Sheldon, IA  
**Service:** 1 year  
 Shawn most enjoys his duties of stocking shelves and also his co-workers.



**Name:** Jeff Dieck  
**Employer:** Pizza Ranch 1½ years and Subway – 2 months  
 Jeff enjoys meeting new people through his work.



**Name:** Matt Kramer  
**Employer:** Sanford  
**Service:** 3 years  
 Matt shares that he enjoys working with his co-workers and his work provides him a sense of accomplishment.



**Name:** Burt Meendering  
**Employer:** Dollar General  
**Service:** 1 year  
 When asked what he likes most about his job, Burt responded, "I like helping people. Sometimes they ask me where to find something and I can show them."



**Name:** Abby Paulsen  
**Employer:** Children's World  
**Service:** 11 months  
 Abby enjoys helping put meals together for the kids. She likes seeing the kids smile when she delivers meals to each room.



**Name:** Jennifer Freed  
**Employer:** Dairy Dandy  
**Service:** 1 year  
 Jennifer enjoys working with her co-workers and all the fun they have while at work.



# *A year in* Pictures

## 2016



1) Back Porch took a trip to the Omaha Zoo. Back Porch is one of the leisure programs offered by VNU.



2) VNU celebrated Autism Awareness month with activities throughout April. Staff wore blue to raise awareness for Autism.



3) Kelsey K – a country artist from Merville, IA – performs for the crowd at the annual Independence Day Celebration.



4) Nicole Tubergen, Director of Communications, works with Autumn on letter identification and forming words using an app on an iPad.



5) Dianne uses a stand aid as she puts binding on packets at Futures, one of VNU's workshops.



6) Chad (left) competes in the 50 meter dash.



7) Sheldon, IA Mayor Tricia Meendering signs a proclamation declaring October 2015 to be Disability Employment Awareness Month in Sheldon, IA.





8) Layne assembles radiation plates in one of VNU's workshops.

9) Pony rides were an attraction at the annual Independence Day Celebration.

10) Brenda places a marigold in a pre-dug hole. Each year 6,000 marigolds are planted by clients and staff around the Village campus on Marigold Planting Day.

11) Burt & Cody work to assemble newspaper inserts at one of the Village's workshops.

12) This year marked the second annual Panthers in the Park event in which the Village Panthers softball team took on the Dingers, a team of high school softball players from the Sheldon area.

13) Runners take off at the 11th annual Run, Walk and Roll held on June 4, 2016. Participants could choose between a 10K run, 5k run or a 1 mile walk/roll.

14) Brad competes in the javelin throw at the District competition hosted by Dordt College.

15) A group of staff and residents went to the Minnesota Vikings Training Camp.



# *I am an* **Athlete**

2016 Special Olympics

## 2015-2016 Participants

**Nicole Arens** // Volleyball, Bowling, Athletics, Soccer Skills, Softball

**Zach Arrick** // Volleyball, Bowling, Basketball, Athletics

**Meagan Bonestroo** // Athletics

**Randy Brounko** // Bowling

**Austin Buurman** // Volleyball, Bowling, Basketball Skills, Athletics, Soccer Skills, Softball Skills

**Kevin Carpenter** // Bowling, Athletics

**John Carter** // Bowling, Athletics

**Jerry Delier** // Bowling, Basketball Skills, Athletics

**Leah Dykshorn** // Bowling

**Jeff Engelkes** // Softball

**Todd Ellis** // Athletics

**Darcy Espey** // Volleyball, Bowling, Basketball Skills, Athletics, Soccer Skills

**Jennifer Freed** // Bowling, Athletics

**Brad Friedland** // Bowling, Basketball Skills, Athletics, Soccer Skills, Softball Skills

**Justin Groen** // Volleyball, Bowling, Basketball Skills, Athletics, Soccer Skills, Softball

**Janet Grooters** // Bowling, Basketball Skills, Athletics, Softball Skills

**LaDel Heiman** // Bowling, Basketball Skills, Athletics

**Paige Herrig** // Bowling

**Matt Kramer** // Volleyball, Basketball, Athletics, Softball

**Mike Kramer** // Volleyball, Basketball, Bocce Ball, Athletics, Softball

**Keith Krumm** // Volleyball, Bowling, Basketball, Athletics, Softball

**Marla Lindley** // Bowling, Basketball Skills, Athletics

**John List** // Volleyball, Bowling, Basketball, Athletics, Softball

**Jordan Magaril** // Bowling, Athletics

**Mike Merley** // Bowling, Athletics

**Maleah Orthmann** // Basketball Skills, Athletics

**Matt Petersen** // Volleyball, Bowling, Basketball, Softball

**Tim Steffens** // Volleyball, Bowling, Basketball Skills, Athletics, Softball Skills

**Bob Stewart** // Volleyball, Bowling, Basketball, Bocce Ball, Athletics, Softball, Softball Skills

**Matt Stoll** // Bowling, Basketball Skills, Athletics, Soccer Skills, Softball Skills

**Kay Stowe** // Bowling

**Peggy Sweeney** // Bowling, Athletics

**Chris Swoyer** // Bowling, Basketball Skills, Softball Skills

**Mary Swoyer** // Volleyball, Bowling, Basketball Skills, Athletics, Softball Skills

**Shawn Todd** // Volleyball, Basketball, Softball

**Andy Topf** // Bowling, Basketball Skills, Athletics, Softball Skills

**Teri Vander Hamm** // Bowling

**Les Van Engen** // Volleyball, Bowling, Basketball Skills, Athletics

**Chad Wassenaar** // Volleyball, Basketball Skills, Soccer Skills, Athletics

**Jessica Webb** // Softball Skills, Soccer Skills, Athletics

**Scott Wheeler** // Volleyball, Bowling, Basketball, Bocce Ball, Athletics, Softball

**Charles White** // Basketball, Bocce Ball, Athletics, Softball



#### Summer Games

The Village Panthers Summer Games state competitors in Ames, IA.



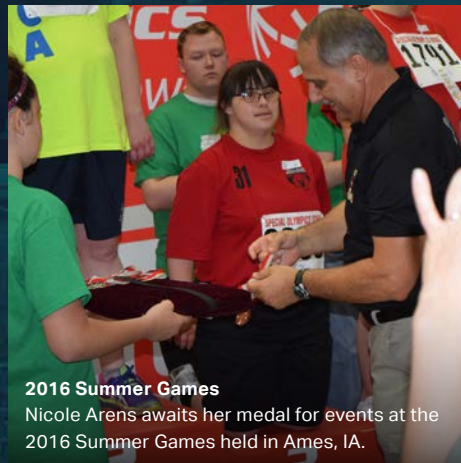
#### State Basketball

Matt Petersen (#14) jumps for the ball during the state basketball tournament.



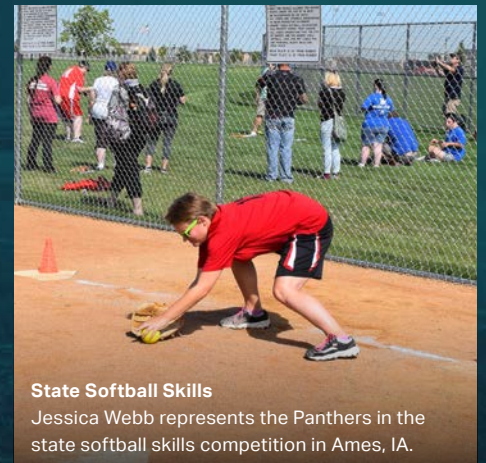
#### Relay

Keith Krumm passes the baton to Jessica Webb in a relay event at the state qualifying meet held at Dordt College in Sioux Center, IA.



#### 2016 Summer Games

Nicole Arens awaits her medal for events at the 2016 Summer Games held in Ames, IA.



#### State Softball Skills

Jessica Webb represents the Panthers in the state softball skills competition in Ames, IA.

# Special Olympics Summary

The Village Panthers Special Olympics team had an active year with scrimmages and competitions happening each season. There were 42 athletes participating throughout the year. The teams are coached by Deb Middle and Sara Wolthuizen.

#### Basketball Scrimmage Events:

- Sheldon High School – half time of girls' varsity game
- Sheldon High School – half time of boys' varsity game
- Dordt College - half time scrimmage
- Northwestern College – half time scrimmage
- Morningside College – half time scrimmage vs Sioux City Knights

#### District Competitions:

- Basketball Skills – Sioux Center, IA
- Athletics – Sioux Center, IA
- Softball Skills – Manning, IA
- Softball Team Tournament – Des Moines, IA
- Bowling – Sanborn, IA

#### State Competitions:

- Basketball Skills and Basketball Team Tournament – Iowa City, IA
- Athletics, Bocce Ball and Soccer Skills – Ames, IA
- Softball Skills and Softball Team Tournament – Ankeny, IA
- Volleyball – Ames, IA
- Bowling – Sioux City, IA

#### Other:

- NAIA Basketball Clinic – Sioux City, IA
- NAIA Softball Clinic – Sioux City, IA



# *I am* Ready for Adventure

## A Story about Eric Graves

Growing up in Hartley, IA, there was no special treatment for Eric Graves. His parents treated him just like they did all their boys; having Cerebral Palsy didn't absolve him from any family responsibilities. Nor did it mean he had any special privileges over his brothers. Eric's chores included sweeping the garage and he also had to do what most kids dread, the dishes.

"We always encouraged Eric to try new things as he was growing up," said Jill Graves, Eric's mother. "When he wanted to ride go-carts, we figured out a way for him to do that. He's even driven a car, which probably scared the neighbors when they saw us." It's all part of a family attitude of 'why not, let's do it' which has helped Eric become such a fun-loving and active part of his family. He wasn't afraid to try a new adventure.

Eric graduated from high school in Rock Valley, IA. As part of his high school curriculum, he would attend the work center at Northwest Enterprises for job training opportunities. He lived at home until he was 22 years old and then made the decision to move to Sheldon, IA and the Village. Eric first lived on campus in ICF/ID care when he came to the Village. Then, for a few years he moved to a community waiver home where he was able to live more independently. However, in 2014, Eric faced some significant health challenges over a 4 - month period. During that time, he was in the hospital for 36 days. He again lives in a campus home and recently moved to one of the newly constructed homes.

Eric's week includes a job at Northwest Enterprises where he works on a number of projects including newspaper inserts, packaging and shredding. "I like to have some spending money," says Eric. "It's fun working with other people."

Eric is part of the Special Olympics team participating in athletics and bowling. Eric enjoys traveling and has had opportunity to visit family in Boston. He's also been to California and Florida. As a Kansas City Chiefs fan, he's been able to take in two games as well.

One of the things Eric has always enjoyed doing with his brothers is watching WWE and talking about wrestling. "When they were kids," says Jill, "the boys and their friends would pretend they were professional wrestlers. The boys would wrestle and Eric would be their manager. He was always included in the fun. At times he'd be wrestling too." Eric laughs at those memories and admits that he is still on the receiving end of a headlock from one of his brothers now and then.



"When they were kids, I remember hearing the boys all sneak down the stairs on Saturday morning to watch cartoons together," says Jill. "Eric's brothers would give him blanket rides down the stairs so he could join them. I'd hear thump, thump, thump and giggling as they pulled him on the blanket." Eric laughs about that memory.

That home environment is what contributed to Eric's love of games, music, fascination with WWE, and a strong sense of family. He likes to have fun and it seems that fun always includes family and friends. He enjoys playing computer games and a favorite class opportunity that he participates in is 'music and motion'.

Every other weekend, Eric goes home to Hartley and spends time with his family, which now includes three cute nieces ages 7, 5 and 3. They are a big part of his life. They help keep things fun and lively when everyone is home.

When asked what he would like people to know about him, Eric shares, "I want people to know that I am good to get along with and that I like to have fun." Breann Getting, Eric's residential leader and advocate, agrees. She says, "Eric is always talkative and has a great sense of humor. He's a great conversationalist."

Eric and his family chose the Village in part because it's so close to family. "We are so glad to have the Village right here," says Jill. "We didn't really consider other places. There is so much opportunity for Eric here."

The Village family is honored to be part of his next adventure.

# *I am* Magnetic

A Story about  
Meagan Bonestroo

Everybody at the Village knows Meagan Bonestroo. She has a special way of pulling people in with her humor and easy smile. Her quick wit is something that she practices with family and friends, especially those she knows well. If you ask Meagan where her humor comes from, she will tell you, "It's from my dad".

Meagan became part of the Village family seven years ago after moving from Hull, IA. She's the daughter of Lyle and Sindy and sister to twin brothers Brady and Dylan. Cerebral palsy has affected Meagan's body, but it hasn't been able to touch her spirit. She enjoys life. She values family. She likes to spend time with friends and enjoys going to concerts and movies. She's also part of the Panthers Special Olympics team, participating in athletics, where she has become an award-winning electric wheelchair race competitor.



Soon after Meagan moved to the Village, she had several health complications and spent most of her first three months in and out of the hospital. Then, she was in the hospital again 2-3 times each year for the next four years. Her care needs were significant. "She had some major medical issues soon after moving to the Village," said Sindy Bonestroo, Meagan's mother. "As the days passed and she was still in the hospital, I worried that the Village might tell me they would no longer be willing to help her. They assured me that we would work through it together and we did. Those days are behind us now and, thankfully, Meagan has been pretty healthy since then."

Meagan is quite active at the Village and her work in the paper area of Northwest Enterprises is meaningful for her. She's one of the team members who shreds documents for companies for recycling. "It's not so much about how much money she is earning at her job," says Sindy. "It's important for Meagan to feel that she is being relied on by others to be there. There is dignity when people are relying on her to do her job. It gives her a reason to get up and get going in the morning."

Her days also include program and therapy, in addition to her work. Meagan loves music and, through the music program, she has had opportunity to play the bells in concerts. "This is something she probably wouldn't get to do if she weren't at the Village," says Sindy. Meagan has had opportunity to do many things at the Village including recently seeing comedian Jeff Dunham. There are also trips and outings on a regular basis. These might seem like small things, but they are all things that continue to make Meagan feel special and help to enrich her life.

Something important to understand about Meagan's day is this: it's a monumental amount of work for Meagan to do what she does because of her physical limitations. She uses an electric wheelchair that she operates by slight head movements. Cerebral Palsy has limited her muscle tone so much that it's constant work to just hold her head upright and steer her chair. "When Meagan gets home in the evening after a day of program and work, she's physically exhausted," says Sindy. "Yet, she is determined to keep going."

Like many parents do, Sindy and Lyle have long reminded Meagan that she is 'special and spoiled'. Sindy shares, "My biggest worry when Meagan moved to the Village was that she would lose that feeling of being special and spoiled. That didn't happen. She is still very much both special and spoiled. The staff has been wonderful to Meagan." The staff has become an extended family for Meagan and her family. And Meagan is very loyal to family. So much so, that when she had the opportunity to move to one of the newly constructed campus homes, Meagan said 'no' because it would mean having different staff.

## *What is* Cerebral Palsy?

Cerebral Palsy is a neurological disorder caused by a non-progressive brain injury or malformation that occurs while the child's brain is under development. It affects body movement, muscle control, muscle coordination, muscle tone, reflex, posture and balance. It can also impact fine motor skills, gross motor skills and oral motor functioning. Secondary conditions may also be associated with CP and can include difficulty feeding and swallowing, respiratory issues, speech impairment and others.

Meagan enjoys a close bond with her family and looks forward to spending time at home every weekend. When you ask Meagan what she likes about the weekend she'll tell you 'going home'. Jennifer White, Meagan's residential leader and advocate shares, "You can actually see a change in Meagan as the week goes on. By Thursday, she's extremely talkative and bubbly. The anticipation and excitement that she has for spending time with her family brings something out in her. She can be like a magnet – drawing people in with her humor and fun personality."

Sindy shares, "Meagan is living her life to the fullest at the Village, and I thank God every day for this place."



# *I am* **Expressive** **without Speaking**

**A Story about Leah Swanson**

As a 15 month old, Leah was diagnosed with epilepsy. She attended preschool at River Valley School in Rock Valley, IA and later was enrolled in the Spencer, IA school district where she graduated in 2012. While Carmen and Kerry Swanson, Leah's parents, had heard about Village Northwest Unlimited when Leah was in high school, they didn't give the idea much thought because they weren't yet ready for her to leave home.

After high school, Leah lived at home and was being cared for by her parents. Their case worker from the Department of Human Services suggested that Leah might benefit from living in a group home and suggested Village Northwest Unlimited. In June 2014, Leah and her parents began to investigate different options. After touring the Village, they decided that it really was the best fit for Leah. They completed the application, got the paperwork in order, and settled in to wait for an opening. However, in their case, the process moved very quickly and Leah was able to move in to her home at the Village in December 2014, within six months of their search decision. "Leah has been busy ever since," says Carmen Swanson, Leah's mother.

Having Leah leave the nest and handing her daily care to others was stressful for Leah's parents. It was especially difficult for Carmen. "When you have been the primary care giver for so long, letting go and trusting that others will provide for her in the way that you would is heart-breaking," says Carmen.

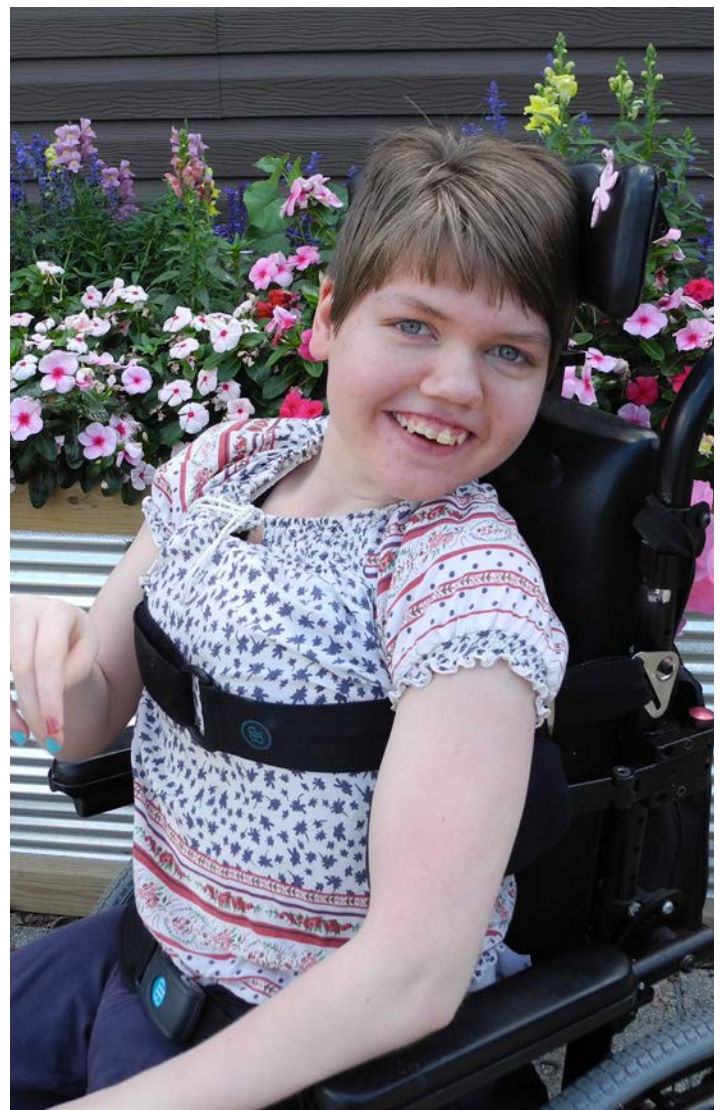
The good news is that it has been a lot easier transition for Leah than it has been for her parents. Leah is doing well and fits in with everyone at the Village. "I believe that her overall well-being is great at the Village," says Carmen. "She's happy. She's active. With her house staff, she is able to take part in different community activities, movies and shopping."

Leah's day includes activities such as life skills programming, physical therapy and communication therapy sessions. Leah is non-verbal, so she relies on non-verbal communication skills and tools to communicate with others. Communications staff is currently working with Leah to learn basic communication skills via the use of a switch or button. "We are working on the concept of cause and effect," says Nicole Tubergen, Communications Director. "We are teaching Leah to use a simple switch for her response. That is the first step in what could eventually lead her to using more advanced communication tools." Being with others during the day for programming gives her opportunity to interact.

"The staff here has been amazing," says Carmen. "They have the experience to deal with Leah's level of disability and they know what they are doing in the care of individuals with disabilities. We are so thankful to have a place where there are things for her to do."

"I would recommend Village Northwest Unlimited to anyone who needs the option," says Carmen. "Visit here first. Anywhere else, you're just wasting your time. This is Leah's permanent home."

Despite her challenges, Leah has a happy spirit. She enjoys being with family and around other people. She enjoys music and pets and being outdoors. According to Kris Meyer, Leah's residential advocate, "Leah always has a smile on her face and loves to be on the go. It's amazing to see how she is so expressive even without speaking."





# *I am a* **Flamingo**

## **A Story about Nicole Arens**



At first, Nicole Arens might strike you as reserved, even shy. However, once you get to know her you will quickly find that she has a very fun and bubbly personality. Originally from Le Mars, IA, Nicole moved to Sheldon, IA and a community waiver home with Village Northwest Unlimited in July 2006.

Nicole works in a variety of settings with supported community employment through Northwest Enterprises. Her experience includes working at Staples in Orange City, IA and working as part of a custodial group at the city offices in Sheldon. She has also worked in the work center in areas including newspaper inserts, recycling, and light assembly. She can regularly be found cleaning the snack area at the VNU Wansink Center.

"Through work opportunities, Nicole has learned to manage money," says Nicole's mother, Dorothy Arens. "Working allows her to earn money, which lets her do fun things like going out to eat or buying music. In the same way, she's learning the value of time. If she completes her work or other tasks in a timely manner, she has more time for the fun things she wants to do."

There's definitely more to Nicole than her work. She is active in sports, participating in basketball, softball and athletics with the Special Olympics teams. She is also a member of the Advisory Council at the Village – a group of residents whose primary mission is to keep our legislators informed about issues affecting individuals with disabilities and to advise the Leadership of the Village on matters important to our residents.

Nicole is described by those who are close to her as a 'girly-girl'. She loves music, dancing, shopping and spending time with family. She likes to get out and go places. According to her residential leader, her love of music would probably make her an excellent DJ.

Nicole's residential leader and advocate, Cheryl Hanson says, "Nicole's growth over the past 10 years is what impresses me

most about her. She has worked hard at learning her daily routine and managing her time well. She prefers a slower pace, but has learned that if she takes her time with work, then she has less time available for relaxing. Nicole is very thorough with any task she does - cleaning, cooking, etc."

Dorothy, shares, "Nicole has really changed since moving to the Village. For so long, Nicole didn't speak up for what she wanted. She has learned to say things to her staff so they know how they can help her. She has also grown in her relationships. Before, most of Nicole's close connections were with family. She's now making more connections with peers and that has been a positive change for her."

Cheryl agrees that Nicole has grown in her confidence to ask for what she needs and inform her staff of what she is thinking or feeling. "We have learned that Nicole is a visual learner, so we create step-by-step task pictures on her iPad to help her learn complicated tasks. She typically doesn't need the pictures anymore, but the iPad is a useful tool. Once Nicole learns a skill, it becomes part of her and her routine. Sometimes when individuals achieve a goal they think they don't need to keep practicing that skill. Not Nicole! I'm very proud of her for that."

The ladies at Nicole's home have chosen the Flamingo as their mascot. What it means to be a flamingo is a secret held closely by the ladies in the house. But, what they are willing to share is that flamingoes are very social birds and they dance. Flamingoes flock/fly together, much like geese. There is always one leader who, when tired, drops back and lets another member take over and lead (teamwork). If a flamingo is sick or injured, one flamingo drops out to stay with the sick/injured flamingo until they recover (take care of each other). The ladies are really proud to identify with their group/mascot. It makes them feel special...which they are.

In Nicole's case, she proudly says, "I Am...A Flamingo!"

# *Programs at* **The Village**



## *I am a* **Music Instructor**

### **Nikki Lehner**

I am a Village Northwest Unlimited music instructor. I am a teacher in the music room allowing individuals to explore the musical world through instruments, music and activities. In my classroom, individuals choose the instrument they would like to play, but I also teach them how to play specific instruments. I teach the basics of music by playing games like musical Yahtzee and having musical Olympics. Everyone can use the basics of music, such as counting to four, in their daily lives. Music helps individuals communicate with their peers. After all, music is a universal language.

## *I am an* **Occupational Therapy Instructor**

### **Teanna Montoya**

I am an Occupational Therapy Instructor. My objective is to help individuals live as independently as possible. I focus on motivation and living life to the fullest. This can be anything from helping someone complete their hygiene routine to building adaptive devices or even sensory integration and social skills. It's my job to figure out how to help individuals become as independent as possible. That looks very different for each individual. I work very closely with Physical Therapy, Communications, Vocational, Nursing, and Snoezelen to accomplish these goals.



## *I am a* **Job Coach**

### **Jessica Klatt**

Being a job coach is very rewarding. I help individuals learn to perform their job in the community. I work with individuals that have little job experience and help them learn to do more complicated job tasks by breaking the tasks down into smaller tasks until they are able to complete the job on their own. By investing extra time and dedication, I am able to help people who otherwise may not have a chance to succeed at a specific job. I try to coach them in a calm and relaxed atmosphere because if you overwhelm people they may shut down or get upset. I try to teach them the way I would like to be taught. My reward is being able to look back and say, 'I helped them get there!'



# *I am a* **PEERS Instructor**

**Karma Funk**



I am a PEERS® instructor, one of two at VNU. We are the only Certified PEERS instructors in the State of Iowa. I teach evidence-based strategies to individuals with High Functioning Autism (HFA) and those who struggle to make and keep friends. PEERS: Program for the Education and Enrichment of Relational Skills, is a 16-week course taught once a week for 90 minutes per session. While students and young adults are participating in their session, the program is also taught to parents or social coaches in another classroom. This allows the parent/social coach to be involved in helping their teen/loved one be successful outside of class time. We offer PEERS to two age groups, teens in high school and young adults between the ages of 18 and 30. Topics covered include trading information, two-way communication, choosing appropriate friends, the appropriate use of humor, entering and exiting conversations, handling arguments, changing reputations, and handling bullying.

Teaching these concepts is not the only thing I do. I encourage. I listen. I problem solve. I help individuals see the "why" of the information provided to them. The individuals I teach see more positive social interactions and begin to have get-togethers with friends, something they may never have experienced before. I help individuals learn to build friendships because friendships make life more enjoyable.

# *I am a* **Communications Instructor**

**Nicole Tubergen**



I am a Speech and Language Pathologist Assistant. I perform responsibilities prescribed, directed and supervised by a Speech and Language Pathologist (SLP). I see a variety of individuals in need of communication services. I help some to practice articulation and speaking clearly. I help others who need to focus on oral motor exercises. Others that I work with need assistance with mastering social skills or need to learn cause and effect. Under direction of a Speech Language Pathologist, I implement the use of low tech devices, such as switches and picture cards, and more high tech devices, such as iPads and AAC (Augmentative and Alternative Communication) devices that help individuals learn alternative ways to communicate.

While I work primarily as an SLP assistant, I also have background in education and a bachelor's degree in Social Work, both of which have greatly helped me in working with and understanding the individuals we serve.



# *I am...* **Retired**

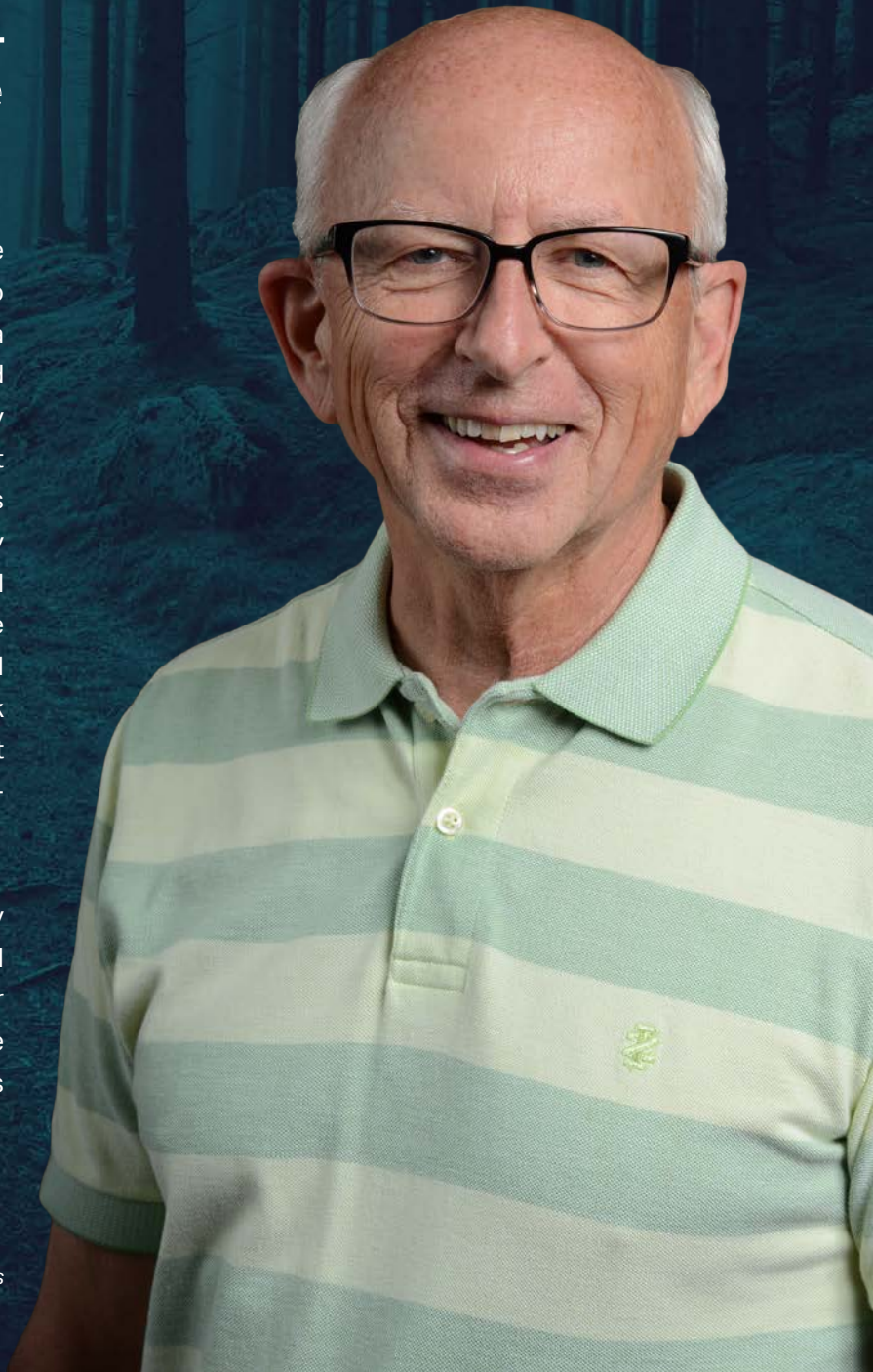
---

## Thank You Phil Grove

After 37 years of dedicated service to Village Northwest Unlimited, we are saying goodbye to Phil Grove, Director of Admissions. Phil has been a cornerstone of the organization for many years and will be missed by staff and residents alike. Barry Whitsell, CEO, commenting on Phil's retirement stated, "No one individual at the Village epitomizes the Village mission of providing purpose, privacy and dignity to all people more than Phil Grove. Phil exhibits everyday what it means to live the Village mission. He represents all the Village stands for. I am so grateful to have had the experience to work with and for Phil as he has taught all of us what it means to be a servant leader by his unselfish example and mentoring."

Phil shares, "I thank the Village for the opportunity to have called this my 'home away from home' and I will sincerely miss the daily hugs, smiles, and other interactions I have had with my Village Family. I have learned so much from each of them and I will always treasure these friendships."

*Phil Grove, Director of Admissions*





# Our Businesses

*Support Village Northwest Unlimited*



Fantasia's Gift Shop and Coffee Bar is an experience worth remembering. We carry home & seasonal décor, candles, flowers, baby products, jewelry, kitchen gadgets, whole coffee beans, Nordic Ware Baking and Grilling Pans, Caren Lotion, and a variety of gourmet foods. We also offer a bridal registry. While shopping, enjoy a gourmet cup of coffee or an espresso drink. We have ice cream sundaes, real fruit smoothies and fresh muffins daily.

#### HOURS

Monday – Friday 9:30 am - 5:00 pm  
Saturday 9:30 am - 4:00 pm

Mondays in November & December:  
9:30 am - 7:00 pm



The Village Treasure Chest offers a variety of quality, clean and gently used clothing for the whole family. We also offer shoes, books, greeting cards, jewelry, home décor, small appliances, furniture, one of a kind items, vintage and so much more.

#### HOURS

Monday – Thursday 9:00 am - 6:00 pm  
Friday – Saturday 9:00 am - 4:00 pm



Northwest Produce operates a 15,200 square foot greenhouse growing 2,800 tomato plants. Vine-ripened chemical free tomatoes are sold and marketed through area grocery stores and restaurants during the months of April through November. Look for the Northwest Produce sticker in the produce aisle of your grocery store.



*July 1, 2015 - June 30, 2016*

# Volunteers

Linda Adams	Jo Franken	Jackie Mejia	Carolyn Van Maanen
Coleen Ahlers	Elinor Gesink	Mary Miedema	Harriet Van Meeteren
Linda Andersen	Sheril Getting	Sandy Mouw	Lois Van Meeteren
Logene Anderson	Lillian Green	Laurie Mowry	Maria Van Velzen
Kinley Baatz	Amy Grooters	Marjorie Ness	Renee Van Velzen
Cindy Barwick	Janet Grooters	Lou Mae Novak	Gert Van Wyk
Harvey Bauman	Nicholas Harald	Angela Palmer	Marie Vander Griend
Marlyss Bauman	Bev Heemstra	Fran Peelen	Loretta Vander Linden
Elle Becker	Rod Heemstra	Diana Perry	Francine Vander Pol
Lorna Blumeyer	Joyce Heitritter	Chris Peters	Sherry Vander Pol
Roger Boer	Cindy Hofstra	William Plantage	Darlene Verrips
Nina Bolkema	Hilda Holtrop	Delores Popma	Tres VerSteeg
Elaine Boogerd	Shirley Jager	Donna Poppema	Charlotte Vierhout
Barb Bootsma	Leona Johnson	Eleanor Poppema	Sandy Voss
Wilma Bootsma	Claire Johnson	Donald Riemersma	Karen Wagenaar
Heidi Brown	Nicole Johnson	Alyda Roetman	Harold Wagenaar
Sylvia Buyert	Muriel Kanengieter	Jane Rohde	Marge Warner
Kenzi Carrigan	Carleen Kehrberg	Barb Rozeboom	Arlene Westerveld
Daniel De Boer	Marilyn Kleinwolterink	Lois Russell	Alma Westra
Samuel De Boer	Nell Kleinwolterink	Verilyn Schilling	Iola Whitsell
Dixie De Jong	Sally Koedam	Lynn Schimmer	Marla Wibben
Wanda De Roon	Peggy Koele	Betty Schott	Janice Wielenga
Kari Dean	Donna Koepnick	Bob Schuiteman	Lois Wolfswinkel
Sam Dieken	Sherry Kooiker	Katy Shelp	Myrna Wolfswinkel
Bonnie Dixon	John Kreykes	Kristie Simonsen	Connie Zonnefeld
Marv Donkersloot	Betty Kreykes	Scott Simonsen	Martha Zoutendam
Dorothy Dykhuizen	Bernice Kreykes	Barb Sorensen	Ron Zoutendam
Alice Dykstra	Kathy Kuyper	Alice Stapenhorst	Kathleen Zylstra
Julia Dykstra	Jeanne Lichty	Carol Sterk	Verna Zylstra
Brittini Ebel	Susan Lichty	John Swoyer	
Mike Elgersma	Jane Lode	Sonja Townend	
Suzy Faber	Taylor Madden	Anita Van Bruggen	
Jeanne Feekes	Evelyn McCarthy	Bonnie Van De Brake	
Art Franken	Angie McGillick	Pat Van Horsen	



*July 1, 2015 - June 30, 2016*

# Donors

## Businesses

A & K Electric	J & J Building Contractors, Inc.	Sanford Health - Sheldon
Ag Partners, Inc - Sheldon, IA	K. F. Murphy Company, P.C.	Savings Bank of Primghar, Hartley & Lake Park
ALCECO	Kamies Plumbing & Heating Inc.	Security Savings Bank
American Investment & Trust	Kooima & Kaemingk Commodities	Sheldon Chiropractic Clinic
American Pop Corn Company	Lake Park Care Center	Sheldon Family Dental Clinic
American State Bank	Lewis Family Drug	Sheldon Vision Care
Andringa Funeral Home	Maintainer Corporation	Shiny Pink Bucket
Avera Health	Molyneaux Insurance	Siouxland Fabricating, Inc.
Billings and Company	Morgan Collision & Tire Center	St. Luke Homes & Services, Inc.
BPTLA, LLC	Mr. P's Pizza & Sports Grill	Stand Aid Of Iowa, Inc. / Gemco
Burley's Incorporated	Neal Chase Lumber Company	Subway - Sheldon, IA
C & A Repair Company	North West REC	Summit Dairy
Cannon Moss Brygger & Assoc., P.C.	Northwest Decor & Furniture	Super Hi Tech
Casey's General Stores	Northwest Iowa Community College	Te Slaa Trucking
Chit Chat Café / Kelly's Drive Inn	Northwest Iowa Power Cooperative	The Dental Office
Citizens State Bank	Northwestern Bank	Top Notch Stitching
CoBank	O'Brien County Implement	Truist Comprehensive Distribution
DeKoter, Thole & Dawson, P.L.C.	Oostra Plumbing, Heating, & A/C, Inc.	Union Bank
Deluxe Animal Health, Inc.	Orange City Area Health System	Vamp Salon
Den Hartog Industries	Orange City Sanitation, Inc.	Van Engelenhoven Agency, Inc.
Dethmers Mfg.	P & K Pest Control	Van Zyl Trucking
DK Plastics	Pella Rolscreen	Vander Haag's, Inc.
Don's Auto Service, Inc.	Peoples Bank - Sheldon, IA	Vetter Health Services, Inc.
Don's Sheet Metal	Peoples Bank & Trust - Rock Valley, IA	Vogel Paint & Glass
Doorenbos Poultry, Inc.	Perspective Insurance	W Dover Tours
Drs. Geyer & Binzer	Pizza Ranch - Sheldon, IA	Wheelchair Dynamics, Inc.
Edward Jones	Pluim Publishing Inc.	Willett Insurance
European Roasterie, Inc.	Precision Alignment & Repair, Inc.	
Farmers Market Concrete & Excavation Inc.	Primghar Rehab & Care Center	
Farmers Mutual Insurance Association	Principal Financial Group	
Farmers State Bank	ProActive Physical Therapy & Sports Rehab	
Fred's Plumbing & Heating	- Sheldon, IA	
Hawarden Regional Healthcare	Proactive Physical Therapy & Sports Rehab	
Heartland Care Center	- Sioux Center, IA	
Heartwood Heights	Quality Living, Inc.	
Hillcrest Health Care Services	Quatro Composites	
HTC Communications	Revival Animal Health Inc.	
Hubers Plumbing, Heating & A/C, Inc.	Ron Drenkow Motors, Inc.	
HyVee	Rosenboom Frame & Body	
Interstates Companies	Ryden Equipment & Rentals/Sanborn Hardware	
Iowa Information Inc.	Sam's Barber Shop	
Iowa State Bank	Sanford Health	

# Churches

Adaville United Methodist Church - Merrill, IA  
Alton Reformed Church - Alton, IA  
American Reformed Church - Hull, IA  
American Reformed Church - Primghar, IA  
Bethel Christian Reformed Church - Sioux Center, IA  
Bethel Reformed Church - Little Rock, IA  
Bethel Reformed Church - Sheldon, IA  
Calvin Christian Reformed Church - Rock Valley, IA  
Carmel Reformed Church - Rock Valley, IA  
Christian Reformed Church - Hospers, IA  
Christian Reformed Church - Ocheyedon, IA  
Christian Reformed Church - Rock Rapids, IA  
Christian Reformed Church - Sanborn, IA  
Covenant Christian Reformed Church - Sioux Center, IA  
Crossroads Community Church - Sheldon, IA  
Ebenezer Presbyterian Church - George, IA  
Faith Christian Reformed Church - Sioux Center, IA  
First Christian Reformed Church - Orange City, IA  
First Christian Reformed Church - Rock Valley, IA

First Christian Reformed Church - Sheldon, IA  
First Congregational Church - Peterson, IA  
First Lutheran Church - Milford, IA  
First Presbyterian Church - Paullina, IA  
First Presbyterian Church - Sibley, IA  
First Reformed Church - Boyden, IA  
First Reformed Church - Hospers, IA  
First Reformed Church - Hull, IA  
First Reformed Church - Inwood, IA  
First Reformed Church - Maurice, IA  
First Reformed Church - Melvin, IA  
First Reformed Church - Orange City, IA  
First Reformed Church - Sanborn, IA  
First Reformed Church - Sheldon, IA  
First Reformed Church - Sibley, IA  
First Reformed Church - Sioux Center, IA  
Grace Lutheran Church - Primghar, IA  
Heritage Reformed Church - Hull, IA  
Hope Christian Reformed Church - Hull, IA

Hope Reformed Church - George, IA  
Hospers Christian Reformed Church - Hospers, IA  
Immanuel Christian Reformed Church - Sheldon, IA  
Lyon County 1st Presbyterian Church - George, IA  
Newkirk Reformed Church - Hospers, IA  
Presbyterian Church - Hospers, IA  
Salem Lutheran Church - Correctionville, IA  
Seney United Methodist Church - Le Mars, IA  
Sheldon Church of Brethren - Sheldon, IA  
Sisters of St. Francis - Redwood City, CA  
St. Alban's Episcopal Church - Spirit Lake, IA  
St. John Lutheran Church - Cushing, IA  
St. Peter Lutheran Church - Pocahontas, IA  
United Methodist Church - Marcus, IA  
United Presbyterian Church - Alton, IA  
United Presbyterian Church - Boyden, IA  
Zoar Presbyterian Church - George, IA

# Groups

Amazon Smile  
American Legion Buss-Johnson Post 316  
Boyden Charities - Boyden, IA  
Goodsearch / Goodshop  
Iowa State Knights of Columbus - Granville, IA  
Iowa State Knights of Columbus - Sheldon, IA  
Knights of Columbus - Larchwood, IA  
Knights Of Columbus #2960 - Sibley, IA

Lakefield Lions Club - Lakefield, MN  
Lions Club Of Sheldon - Sheldon, IA  
Lucan Lions Club - Lucan, MN  
Prairie Queen Kiwanis - Sheldon, IA  
Progress Club - Primghar, IA  
Rock Rapids Fire Fighters Association - Rock Rapids, IA  
Sacred Heart School  
SCDC Marketing Committee - Sheldon, IA

Sheldon Noon Kiwanis Club - Sheldon, IA  
Sheldon United Fund - Sheldon, IA  
St. Louis Altar Society - Royal, IA  
Stewart Family Foundation - Rock Rapids, IA  
Sutherland American Legion Auxiliary #152 - Sutherland, IA  
The David Scott Foundation  
United Commercial Travelers #357 - Storm Lake, IA

# Individuals

Clark & Mary Abel  
Linda Adams  
Tom & Sharon Adams  
Jean Ahrenstorff  
Carl Allen  
Clarice Alons  
Dawn Alons  
Hannah Altena  
Stanley & Elaine Altena  
Amanda Altman  
Anne Amato  
Patty Amerson  
Curt & Lycia Anderson  
Terry & Becky Anderson  
Mike Andringa  
Paul & Trudy Anema  
Lowell & Karen Appleton  
Dorothy Arens  
Nicole Arens  
Aaron Armer  
Kathy Arnold

Amy Arrick  
Terry & Roxanne Ashland  
David Asmussen  
Ed & Kathy Baartman  
Ken & Shirley Baartman  
Randy & Lois Baartman  
Bryan & Jo Ann Bailey  
Dwight & Colleen Baker  
Verlyn & Bethann Bakker  
Larry & Coleen Baldwin  
Norman & Ruth Barker  
Cynthia Barnaby  
James Barnett  
Gary & Cynthia Barwick  
Harvey & Marlyss Bauman  
Freida Baumann  
Mitch & Katie Bean  
Luella Behrens  
Elmer & Stella Beltman  
Gladys Jacobsma Beltman  
Norman & Karel Beltman

James & Deb Benner  
Twilla Bents  
Mr. Verlyn Berg  
Susan Betsworth  
Nate Bever  
Tim & Polly Bever  
Eleanor Blankers  
George & LaVonne Blankers  
Susan Blankers  
Gilbert & Margie Blochowitz  
Mark & Lori Bloemendaal  
Barb Blom  
Carol Blum  
Joan Bly  
Dr. Terry Boelter  
Rev. John & Ruth Boender  
Ruthann Boender  
Dale & Karen Boer  
Mr. & Mrs. Darold D. Boersma  
Ed & Jody Bolkema  
Erv & Gladys Bolkema

Marcia Bolkema  
Sherwyn & Marilyn Bolkema  
Brittany Bolluyt  
Laurie Bolluyt  
David & Anita Bomgaars  
Pauline Bonderson  
Bruce Bonestroo  
Dwayne & Rhonda Bonestroo  
Lyle & Sindy Bonestroo  
Meagan Bonestroo  
Tom & Laura Bonestroo  
Lowell & Glenda Bonnema  
Bobbi Boon  
Wendell Boon  
Marvin & Donna Boone  
Thel & Alma Boone  
Cork Bootsma  
Bill & Dee Borchers  
Daryl & Norma Bosma  
Esther Bosma  
Brent Bourma



Joe & Cathy Boyle  
 Katie Boyle  
 Anna Braaksma  
 Patricia Brady  
 Matthew & Leah Brekken  
 Randy & Daphne Bremer  
 Dorothy Breuer  
 Julie Brink  
 Ray & Dorothy Brink  
 Shantele Brink  
 Tony & Linda Brinkhous  
 Gary & Dorothy Brinkley  
 Virginia Brinkley  
 Randall Brounko  
 Gertrude Brouwer  
 John & Florence Brouwer  
 Dr. Chad & Heidi Brown  
 Betty Brunsting  
 Doug & Teresa Brunsting  
 Janyce Brunsting  
 Tim & Cheri Brunsting  
 Brenda Buchanan  
 Jim & Kimberly Buenger  
 Sandy Buffington-Lloyd  
 John & Cheryl Buntsma  
 Julie Buren  
 Darrell & Barb Burns  
 Jeannine Burt  
 Zelda Buse Christensen  
 Bill & Ronja Butler  
 Connie Butler  
 Sharon Butler  
 Austin Buurman  
 Jenieta Campbell  
 Robert & Deb Campbell  
 Rick & Lori Cannoy  
 Richard & Sharon Cargin  
 Tim Cargin  
 Douglas & Sandi Carlson  
 Steven & Donita Carlson  
 Suzanne Carlson  
 Timothy & Elizabeth Carlson  
 Kevin Carpenter  
 Linda Carpenter  
 John Carter  
 Margaret Carter  
 William & Connie Carter  
 Roger Casey  
 Azucena Castillo  
 Dennis & Dawn Cermak  
 Scott Chrisman  
 Dr. David & Barbara Christenson  
 Gina Christoffel

Gjergji & Claire Cici  
 Ken & Lisa Ciesielski  
 Ladonna Clasen  
 Marc & Maurine Cloutier  
 Margaret Cole  
 Goldie Colenbrander  
 Rob & LeAnne Collins  
 Randy Compton  
 Adam & Allison Cooke  
 Ruth Corbin  
 John & Carole Lea Cotton  
 Chris & Gina Cronin  
 Bob Culliton  
 Todd Culliton  
 Daryle & Violet Daggett  
 Duane Daggett  
 Gary & LaVonne Daggett  
 Bonnie Dammel  
 Vicki Dammel  
 Jim & Jan Danbom  
 Charlotte Dasen  
 Julie Dau  
 Gregory & Anna Davis  
 Harvey Dale & Marilyn De Boer  
 Ken & Jane De Boer  
 Ned & Linda De Boer  
 Nelva De Boer  
 Bill De Carlo  
 Larry & Jeannie De Graaf  
 Kelly & Pam De Groot  
 Kendall & Jann De Groot  
 Nelvina De Haan  
 Renae De Haan  
 Robert & Cheryl De Haan  
 Newman & Albertha De Haas  
 Dennis & Malinda De Jong  
 Pam De Jong  
 Ronald J. & Ardieth De Jong  
 Bob & Kathy De Koning  
 Beth De Leeuw  
 Tim De Smet  
 Kenzee De Stigter  
 Alfred & Evelyn De Vries  
 Edgar & Phyllis De Vries  
 Myles & Jane Debates  
 Cody Decker  
 Jay & Melissa Decker  
 Doris Delier  
 Sandra Delwiche  
 JoAnn Den Beste  
 Dennis & Sherry Den Hartog  
 Elmer Den Hartog  
 John & Jeanne Den Hartog

Dale & Karen Den Herder  
 Loren & Viola Dengler  
 Lanny & Ardine Dillingham  
 Carla Dittmer  
 Deb Dixon  
 Michael & Linda Dixon  
 Ralph & Karen Dixon  
 Rob & Bonnie Dixon  
 Teresa Dixon  
 David Donahoo  
 Robert & Wanda Donahoo  
 Dustin Dornbrack  
 Ken Doughty  
 Russ Doughty  
 Robert & Marcia Douma  
 Mike & Mary Kay Dreckman  
 Gladys Drenkow  
 Steve & Sheila Drenkow  
 Shea Driesen  
 Shelby Driesen  
 Duane & Lisa Drost  
 David & Judy Dummett  
 Christopher Duval

Joyce Erdman  
 Darcy Espey  
 Gloria Evink  
 Wilbert J Evink or Mary M Evink Re-  
 vocable Trust  
 David & Betty Fahey  
 John & Kristin Fahrendorf  
 Thomas & Glenna Farnsworth  
 Don & Rose Faust  
 Anna Fedders  
 Duane & Marilyn Feekes  
 Jeanne Feekes  
 Randy & Lynette Feenstra  
 Marla Fenske  
 Douglas & Linda Ferguson  
 Mary Fernow  
 Jan Fertig  
 Daryl & Beverly Fickbohm  
 Doug & Janelle Fischer  
 Kim Fischer  
 Mary Fischer  
 Ronald & Debra Fischer  
 Ronald & Denise Flory

*“I am strong.  
 I am beautiful.  
 I am enough.”*

- Unknown

Don & Jan Dykshoorn  
 Jeanne Dykshorn  
 Leah Dykshorn  
 Clarence Dykstra  
 Edna Dykstra  
 John Dykstra  
 Lowell & Judy Dykstra  
 Phil & Kathy Dykstra  
 Brittini Ebel  
 Dan & Kim Ebel  
 Jerome Eischen  
 Corey & Teri Elgersma  
 Mike & Bonita Elgersma  
 Todd Ellis  
 Monte & Patti Emerick  
 Jeff Engelkes

Carl & Corrine Folkers  
 Roy & Lois Folkerts  
 Colleen Foote  
 Russ & Laurie Forbes  
 Tim & Kim Foreman  
 Art & Jo Franken  
 Mark & Wendy Frederick  
 Dean & Connie Freed  
 Jennifer Freed  
 Dr. Wayne Freese  
 Pam Fricke  
 Brad Friedland  
 Doris Friedland  
 Paul & Karma Funk  
 Tom & Cynthia Fuoss  
 Christopher Furman

Jasmine Furman  
 Leon Gabel  
 Juan Carlos & Vianey Garcia  
 Bernadine Garwood  
 Ellen Geels  
 Greg & Starla Geels  
 Daryl Gengler  
 Meg George  
 Junior & Elinor Gesink  
 Dennis & Pauline Getting  
 Josh Getting  
 Maurice & Suzanne Getting

Rev. Conrad & Elaine Guetzlaff  
 Barb Haack  
 Duane & Robin Haack  
 Merne & Edna Haack  
 Rich & Sandy Haack  
 Julie Hagemann  
 Cindy Hallbauer  
 Tony & Deb Haning  
 Dan & Cheryl Hansen  
 Darryl & Gloria Hansen  
 Rose Hansen  
 Roxena Harlow

Kimberly Hoffmann  
 Chuck Hofland  
 James & Joanne Hofland  
 Donna Hofman  
 Terry & Colette Hofmeyer  
 Roland & Mary Hohn  
 Herman & Esther Holtkamp  
 Ruth Holtkamp  
 Hilda Holtrop  
 Joyce Hommes  
 Bob & Esther Hoogeveen  
 Stan & Nancy Hoogland

Eric Johnson  
 Jason & Lisa Johnson  
 Jean Johnson  
 Jim & Jo Johnson  
 Karen Johnson  
 Lowell Johnson  
 Marilyn & Myrna Johnson  
 Jean Jolin  
 Justin & Meredith Jonas  
 Pat & Pauline Jonas  
 Curtis & Mary Ellen Jones  
 Devin Jones  
 Nancy Jones  
 Katie Jordan  
 Lynn Juffer  
 Arvin Juhl  
 Greg Juhl  
 Louis & Mary Ann Juhl  
 Bernie & Marlene Jungers  
 Joseph Jungers  
 Theresa Jungers  
 Chapman Junius & Dr. Josephine Dunn Junius  
 Hendrene Kalsbeck  
 Denny & Sandy Kamphoff  
 Andrew & Muriel Kanengieter  
 Todd & Paulette Karolczak

*“Goodness is about character - integrity,  
 honesty, kindness, generosity, moral courage,  
 and the like. More than anything else, it is  
 about how we treat other people.*

- Dennis Prager

Douglas & Evelyn Gibbons  
 Bill & Jean Giddings  
 Mitch & Greta Giese  
 Katy Gilbert  
 John & Sonya Glenn  
 Glen & Kathy Goedken  
 Kevin & Sue Gonnerman  
 Bernardo Gonzalez  
 Julie Gonzalez  
 Ashley Gordon  
 Josh & Kelly Goslinga  
 Trevor & Kelli Gottula  
 Myron & Nancy Gradert  
 Kelly Graham  
 Woody & Angela Graham  
 Doug & Roxanne Graves  
 Eric Graves  
 Larry & Jill Graves  
 Lillian Green  
 Fred & Ardis Grein  
 Fred & Kathy Grienke  
 Justin Groen  
 Janet Grooters  
 Rod & Lavonne Grooters  
 Tami Groth  
 Jeannette Grove  
 Linda Grove  
 Phil & Pam Grove  
 Shawn & Jennifer Grove  
 Jim Gude

Clifford & Terri Hart  
 Sandy Hart  
 Grace Hartog  
 Laura Haverdink  
 Mike & Hazel Haverhals  
 Lois Haverkamp  
 Roger & Kathleen Hawkins  
 Mike & Jan Haye  
 David & Gloria Healy  
 Curt Hedin  
 Rod & Bev Heemstra  
 Rob & Kristi Hegenbarth  
 Mark & Donna Heilman  
 LaDel Heiman  
 Dr. Rachel Heiss  
 John & Rhonda Heller  
 Steve & Lenora Hendry  
 Henry & Teresa Herrig  
 Paige Herrig  
 Paula & Sherwin Hesebeck  
 Mary Ellen Heying  
 Bill & Josie Hibbing  
 Dr. King & Kecia Hickman  
 Courtney Hicks  
 Francis & Judith Hiemstra  
 Gail & Janice Hight  
 Richard Hildebrand  
 Fredrich & Connie Hilpert  
 David & Ruth Hobson  
 Ashtyn Hoekstra

Kathryn Hooper  
 Eleanor Hooyer  
 Rod Hop  
 Mr. & Mrs. Keith Hoskins  
 Janet Houmes  
 Rick & Cheryl Houseman  
 Thomas & Paula Howard  
 Don & Donna Hrubes  
 Daiana Hubers  
 Margaret Hubers  
 Jeff & Alicia Huffman  
 Jessie Huitink  
 Charlotte Hutchison  
 Mrs. Thea Huygens  
 Clark Iedema  
 James & Gertrude Intveld  
 Michael & Erica Jager  
 Ben & Lorene Jakel  
 Bill & Janyce James  
 Gerald Jansen  
 Danna Januschka  
 Virginia Jauron  
 Bryon & Faye Jelken  
 Linda & James Jensen  
 Randall & Jeanette Jensen  
 Roger & Connie Jerman  
 Marilyn Jiskoot  
 Sidney & Lorraine Jiskoot  
 Sandra Johannes  
 Betty Johnson

John Karr  
 David Kass  
 Don Kass  
 Henry Kass  
 Lea Kass  
 Roger & Madonna Kass  
 Thomas & Deborah Kass  
 Kelli Kauffman  
 Ron & Jane Kauzlarich  
 Lindsey Keeney  
 Jerry & Eula Kelly  
 Renzella Kempema  
 Dr. Earl & Cornelia Kennedy  
 Karen Kennedy  
 George & Margie Kersten  
 Jackie Kibbie-Williams  
 Sylva Kiernan  
 Keli King  
 Zach Klaahsen  
 Delmar & Beverly Klassen  
 Julie Kleen  
 Ruth Kleen  
 Eleanor Kleinwolverink  
 Jack & Nell Kleinwolverink  
 Jim & Judy Kleinwolverink  
 Leon & Carla Kleinwolverink  
 John Klepper  
 Greg & Patti Kliegl  
 Cherie Klimes  
 Lawrence & Joan Kloiber



Chris & Jerri Klumpp  
 Roger & Janet Knoblock  
 Randy & Betty Kock  
 Judy Koele  
 Harvey & Sharon Koerselman  
 Amy Koestner  
 Oran & Mary Kohorst  
 Mark & Alice Kollasch  
 Duane Kolpin  
 Chris Konomos  
 Becca Kooiker  
 Krystal Kooiker  
 Clarice Kooima  
 Erna Kooistra Estate  
 Alfred Korthals  
 Gary & Helen Korthuis  
 Mr. & Mrs. Loren Korthuis  
 Shanna Korthuis  
 Jane Korver  
 Mr. & Mrs. Lawrence Korver  
 Muryl & Rose Korver  
 Harold Kosmicke  
 Ralph & Jean Kosmicke  
 Brent & Pam Kraft  
 Ken & Barb Kreber  
 Arlin & Dee Kreykes  
 John & Betty Kreykes  
 Gerald & Sandra Krier  
 Irene Kruger  
 Marvin & Sharlyn Kruid  
 Reid & April Krull  
 Keith Krumm  
 Deb Kubal  
 Fred & Virginia Kubal  
 Martin & Corrine Kubal  
 Wanda Kuiken  
 Hazel Kuiper  
 Lyle & Tami Kuiper  
 Tim Kunzman  
 Cassie Lambertus  
 Christina Lambertus  
 Lorene Lambertus  
 Ramona Landers  
 Keith & Kathy Landhuis  
 Chad & Ericka Lang  
 Todd & Kim Lang  
 Bill & Julie Langfitt  
 Dale & Sandra Langner  
 Willy & Marcella Langstraat  
 Jeana Larson  
 Otto & Robin Lawson  
 Richard & Sue Leaverton  
 Gerald Leng  
 Alison & Marlys Lenters  
 Dan Lenz  
 William Lenz

William & Julia Leupold  
 Dr. Scott & Susan Lichty  
 Jeanne Lichty  
 Dan & Mindy Liechti  
 James Lill  
 Lavonne Linder  
 Marla Lindley  
 Revs Marvin & Doris Lindley  
 Joe & Tami List  
 John List  
 Tysa Lloyd  
 Angie Locke  
 Duane & Lois Loerts  
 Margaret Long  
 Gary & Linda Lottman  
 Beckie Loveall  
 David & Muriel Loveall  
 Chuck & Arlene Lubbers  
 Richard & Miriam Ludeke  
 Dean Luft  
 Duane & Betty Lund  
 Lyle & Mary Lundgren  
 Marilyn Lundquist  
 Mary Luschen  
 Mr. & Mrs. Norman Lux  
 Chad & Rhonda Lyman  
 Larry & Evelyn Lyman  
 Myles & Susan Magaril  
 Kip & Annette Maggert  
 Jay & Beverly Mann  
 Dr. John & Diane Maresh  
 Joseph & Hazel Martens  
 David Mast  
 Delores Mast  
 Brian & Deb Mastbergen  
 Phil Mastbergen  
 Ross & Elaine Mastbergen  
 Patricia Matthes  
 Jim & Lynnette Mc Alpine

Mr. & Mrs. Michael Mc Alpine  
 Annie Mc Cabe  
 Dan & Lori Mc Cabe  
 Matt Mc Cabe  
 Megan Mc Cabe  
 Doris A. Mc Carty  
 Sylvia Mc Carty-Scheurer  
 Amber Mc Clintic  
 Lori Mc Connell  
 Dorothy Mc Cormack  
 Michael Mc Dermott  
 Molly Mc Donald  
 Paul & Mary Mc Guirk  
 Colleen Mc Laren  
 Mr. Terry R. Meekma  
 Marvin & Judy Menage  
 Chris Mennen  
 Gary & Lynette Mennen  
 James Mennen  
 Bob & Julia Merley  
 Mike Merley  
 Esther Meyer  
 Gary & Virginia Meyer  
 Jerry & Kris Meyer  
 John & Carolyn Meyer  
 Matt & Dawn Meyer  
 Mike Meyer  
 LaVonne Meyn  
 Dennis & Malinda Michels  
 Linda & Daniel Mickalowski  
 Nick & Sharol Miedema  
 Megan Millea  
 Bob & Naomi Miller  
 Charles & LaVonne Miller  
 Harriet Miller  
 Alan & Susan Mills  
 Rodney & Joanne Moget  
 Barbara Mohn  
 Arnold Molendorp

Mike & Lisa Molettiere  
 Travis & Becky Monier  
 Col. Stephen & Mary Sue Moore  
 Cher Moseman  
 Steven & Patricia Moseman  
 Timothy & Linda Motter  
 Brent & Melissa Mouw  
 Geraldine Mouw  
 Lambert & Arlene Mouw  
 Ryan & Katie Mouw  
 Tim Mouw  
 Laurie Mowry  
 Duane & Amy Muecke  
 Arlyn Mulder  
 Bruce & Ingrid Mulder  
 Chuck & Jackie Mulder  
 Dave & Dot Mulder  
 Mr. & Mrs. Carl Mulder  
 Loretta Murphy  
 Ray & Barbara Nasers  
 Tina Natterstad  
 Brian & Paula Nelson  
 Charlie Nelson  
 Dennis & Gail Nelson  
 Karen P. Nelson  
 Roger & Nancy Nelson  
 Donald & Marlene Nielsen  
 Kenneth & Olive Nielsen  
 Rick Nielsen  
 Mark & Shannon Niemeyer  
 John & Sharon Nilges  
 Rick & Carma Nordahl  
 James & Kay Norwood  
 Jerry & Sue Noteboom  
 Eleanor Nyenhuis  
 Duane Obbink  
 Paul & Eleanor Ohling  
 Richard & Dianne Ongna  
 Harlan & Twila Oolman  
 Roger & Charlene Oolman  
 David & Amber Oostdyk  
 Marlin & Arlyce Oosterhuis  
 David Orthmann  
 Joel & Andrea Orthmann  
 Ken & Beverly Orthmann  
 Maleah Orthmann  
 Marion & Johanna Overman  
 Gary & Lois Owens  
 Mallory Palsma  
 Jeff & Linda Paulsen  
 Sandy Pedro  
 Larry & Fran Peelen  
 Betty Pekelder  
 Arnold Pennings  
 Clark & Merilee Pennings  
 Irene Pennings

*“Do your little bit of  
 good where you are; it’s  
 those little bits of good  
 put together that  
 overwhelm the world.”*

- Desmond Tutu

Gene & Gwen Peters  
 Harlan Dean & Mary Jane Peterson  
 Samuel Peterson  
 Phyllis Peterson  
 Helen Peuse  
 Jack & Judy Phillips  
 Edward Pitts  
 William J. Plantage  
 Keith Plendl  
 Jeff & Tara Popkes  
 Howard & Joyce Poppema  
 Robert & Mavis Poppema  
 Roger & Marilyn Poppen  
 Charles & Dorothy Porter  
 Brian Post  
 Connie Post  
 Doug & Betty Post  
 Harold & Everly Post  
 Marilyn & Jane Post  
 Melanie Post  
 Greta Postma  
 Jerry & Alyssa Postma  
 Marvin & Annette Pottebaum  
 Dennis & Jan Potter  
 Charles & Marilyn Powell  
 Gordon & Carol Powell  
 Mark Powell  
 Alyssa Prins  
 John & Diane Pry  
 Carl & Patty Puhmann  
 Adam & Marlene Punt  
 Bill & Cathy Punt  
 Darrel & Rachel Raih  
 Jake Ralston  
 Dr. Brooks & Vi Ranney  
 Marian Reed  
 Frances Rehborg  
 Noah Reiman  
 James & Diane Reimann  
 Mandi Reinders  
 Mary Reinders  
 Dr. David & Debra Reinke  
 Donald & Marilyn Reitsma  
 Herbert Remmerde  
 Shirley Rens  
 Harlan & Arva Reuscher  
 Blair Richter  
 Larry & Rhonda Riebeling  
 Mr. & Mrs. Jason Ringena  
 John & Lorraine Rittmann  
 Ric & Barb Robideau  
 Brian & Rhonda Robyn  
 Nathan & Nicole Rockman  
 Alyda Roetman  
 Roger Roetman

Ruth Roetman  
 Jessica Rogers  
 Rex & Mary Rogers  
 Scott & Lynne Rogers  
 Rick & Vickie Roghair  
 Dr. Carl & Dorothy Rolf  
 Dr. Keith & Jan Rolston  
 Jo Rolston  
 Sylvia Romberg  
 Peter & Jennifer Roos  
 Rob & Sharla Roozeboom  
 Jeff & Kit Rosch  
 Deirdre Rosenfeld  
 Eleanor Rowenhorst  
 Kyle & Rebekah Rozeboom  
 Verlyn & Deb Rozeboom  
 Charles & Janet Ruark  
 Dr. Roger & Myra Ruby  
 Gina Rummel  
 John & Mary Runchey  
 Mary-Claire Runchey  
 Harold & Lois Russell  
 Dianne Ruyter  
 Edward & Therese Sadogierski  
 Ronnette Sailors  
 Alan & Cheryl Sandbulte  
 Calvin Sandbulte  
 Florence Sandbulte  
 Gene Sandbulte  
 Howard & Bernice Sandbulte  
 Leone Sand-Hoeffling  
 LeRoy & Juanita Sands  
 Lyle & Helen Sapp  
 Angie Sas  
 Marla Sas  
 Greg & Paula Sawyer  
 Tony Schaa  
 Cornelius & Esther Schelling  
 Tom & Dianne Schemper  
 Brady & Sara Scherer  
 Kaleigh Schildhouse  
 Duane & Marilyn Schimmer  
 Jesse Schlichting  
 Richard & Margaret Schlotfeldt  
 Dale & Deb Schmidt  
 Clair & Leona Schmitz  
 Dale & Nancy Schmitz  
 Margaret Schmitz & Jo Chinburg  
 Marian Schmitz  
 Thomas Schmitz  
 April Schneidermann  
 Mary Lou Schons  
 Wayne Schons  
 Arlyn & Marlene Schreur  
 Jamie Schreur

*“Speak in such a  
 way that others  
 love to listen to you.  
 Listen in such a way  
 that others love  
 to speak to you.*

- Anonymous

Junior & Frances Schreur  
 John & Kathy Schreurs  
 Micah & Shannon Schreurs  
 Jerrold & Lana Schrock  
 David Schroeder  
 Gregory & Erin Schroeder  
 Bob & Helene Schuiteman  
 Mr. & Mrs. Stanley Schwartz  
 Camron Schwebach  
 Dr. Sylvio J. & Phyllis Scorza  
 Joseph & Rhonda Sessoms  
 Nicole Shaffer  
 Scott & Jill Sheehan  
 Jay & Katy Shelp  
 Jim & Ann Short  
 Larry & La Vonne Sietstra  
 Dick & Colleen Simm  
 Scott & Kristie Simonsen  
 Dwight & Beth Sipma  
 Kathy Sitzmann  
 Norma Skogman  
 Corwin & Pam Slagter  
 Andy & Gayle Smith  
 Daniel Smith  
 Richard & Linda Smith  
 Rodney & Jodi Smith  
 Darrell Sneiderman  
 Virginia Snip  
 Thomas & Jan Snyder  
 Thomas Snyder  
 Marvin & Darlene Sopko  
 Corrin Sorensen  
 Eric Sorensen  
 Marvin & Myrna Sorensen  
 Mike & Janet Sorensen  
 Danial & Lynn Southwick

Harvey Spettel  
 Clifford & Shairi St. Clair  
 Edith Staab  
 Julie Stallmann  
 Nick & Dianna Stallmann  
 Sue Starkenburg  
 Bryan Steensma  
 John Steensma  
 Caitly Steggerda  
 Barry & Karen Sterk  
 Donna Sterler  
 Bryan & Janice Steven  
 Bob Stewart  
 Matthew Stoll  
 Arlene Stonefield  
 Lee & Jenna Stover  
 Kay Stowe  
 Fred & Alice Straub  
 Tiffany Strickland  
 Curt & Emily Strouth  
 Pete & Patricia Strouth  
 Donna Struve  
 Herb & Lorraine Struyk  
 Brent & Barbara Stuit  
 Eleanor Stump  
 Leah Swanson  
 Peggy Sweeney  
 Robert & Constance Sweeney  
 Scott & Lisa Sweeney  
 Chris Swoyer  
 John & Gloria Swoyer  
 John Swoyer  
 Mary Swoyer  
 Ray & Sharon Talsma  
 Greg & Bobbi Taylor  
 Laura Taylor



Orville & Betty Taylor	John Van Gorp	John C. & Ruth Vander Haag	Donna Warren
Doug & Peggy Te Grotenhuis	Gail Van Grouw	Dr. Steven & Dr. Tarra Vander Leest	Michelle Wasielewski
Leola Te Grotenhuis	Con & Rhonda Van Heuvelen	Loretta Vander Linden	Chad Wassenaar
Mr. & Mrs. Gary Te Grotenhuis	William & Dolores Van Iwaarden	Robert & Wilma Vander Linden	Marcia Wassenaar
Cleo & Joyce Te Slaa	Kinzie Van Kekerix	Harry & Lora Vander Pol	Rev. Mark & Samantha Waterstone
Daniel & JoElyn Ten Clay	Leroy & Jasey Van Kekerix	Lyle & Karen Vander Pol	Mr. & Mrs. Donald Watson
Dennis & Deb Ten Clay	Sue Van Kekerix	Janice Vander Schaaf	LaDonna Way
Kevin & Kim Ten Haken	Rev. Dave & Jody Van Kley	Larry & Debra Vander Weide	Wade & Sheila Weaver
Ronald Ten Haken	Willis & Dorothy Van Kley	Arnie & Debbie Vander Wilt	Jessica Webb
Fran Ten Kley	Delmar & Clarine Van Klompenburg	Art Vander Wilt	Ryan Weber
Stan & Jan Ten Kley	Kevin Van Klompenburg	Dorothy Vander Wilt	Marlys Weed
LaRue Terry	Del & Carolyn Van Maanen	Ed & Becky Vander Wilt	Creighton Wegner
Don & Peggi Thies	Rev. Paul & Courtney Van Maaren	Mag Vander Wilt	Robin Weiler
Mike & Beth Thole	Kathy Van Marel	Nelva Vander Wilt	Janet Wepler
Jim & Lori Thomas	Craig & Sarah Van Meeteren	Lora Vander Zwaag	Dr. Mark & Susan Wheeler
Jim & Pam Thornton	Dwayne & Laura Van Meeteren	Joan Van't Hof	Scott Wheeler
Rhonda Thornton	Jeff & Sara Van Meeteren	Brandon Vant Hul	Steve & Shirley Wheeler
Brenda Tibbetts	Larry & Connie Van Meeteren	Jamison Vant Hul	Charles White
Karen Tigges	Linda Van Meeteren	Bernie Van't Hul	Chris & Denise White
Donald & Diane Tischer	Lois Van Meeteren	Cory & Lynn Vaselaar	Dan White
Shawn Todd	Mr. & Mrs. Brian Van Meeteren	Ken & Karla Ven Huizen	Lucille White
Dr. Barbara Top	David Van Oort	Arlene Ver Mulm	Barry & Maggie Whitsell
Andy Topf	Harvey & Gloria Van Oort	Ken & Tres Ver Steeg	Brad & Sara Whitsell
Greg & Laura Topf	Melvin & Arnetta Van Peursem	Harvey & Linda Verbrugge	Iola Whitsell
Larry & Marilyn Topf	Ward & Brenda Van Peursem	Anna Verburg	Nic Wielenga
Paulette Trego	Art & Anita Van Ravenhorst	Larry & Alfreda Verdoorn	Stan & Betty Wilkens
Paul & Barb Truesdell	Alvin & Ellen Van Ravenswaay	Al & Ruth Vermeer	Grayling & Janet Willer
Nicole Tubergen	Paul & Kim Van Ravenswaay	Brenda Vermeer	Jon & Kathleen Wilson
Ingetta Tutje	Clinton & Florence Van Roekel	Gene Vermeer	Dale & Linda Winkel
Dorothy Uittenbogaard	Marion & Jan Van Soelen	Philip & Beverly Vermeer	Judy Winkel
Keith & Marcia Vaandrager	Corwin & Stephanie Van Veldhuizen	Mrs. Louise Vis	Thorne & Linda Wittstruck
Wilma Vaas	Harriet Van Veldhuizen	Linda Vlaming	Jack & Sarah Woelber
Ben & Jen Van Beek	Jasper Van Veldhuizen	Alan & Mary Anne Vogel	Adam & Amber Wolthuizen
Dee Van Beek	Jeane Van Veldhuizen	Ann Vogel	Clarence & Helen Wolthuizen
Irene Van Beek	Mr. & Mrs. Arlan Van Veldhuizen	Lewis D. Vogel	Ken & Sandra Wolthuizen
Lance & Arlene Van Beek	Nellie Van Veldhuizen	Robert & Mary Vogel	Robert & Marlys Wolthuizen
Roger & Lori Van Beek	Sallee Van Veldhuizen	Roger Vogel	Sara Wolthuizen
Cheryl Van Briesen	Pete & Maria Van Velzen	Lee & Cheryl Voigt	Earl & Karen Woudstra
Anita Van Bruggen	Mark & Kristi Van Voorst	Galen & Patty Vollink	Arlene Wynia
Eugene & Krista Van Bruggen	Leah Van Walbeek	Jeff & Gail Vonk	Frances Wynia
Roger & Deb Van Bruggen	Gert Van Wyk	Kristin Vonnegut	Marvin & Esther Wynia
Jack & Margene Van Dam	Lowell & Patty Van Zyl	Margaret Vos	Kevin & Julie Wynja
Wilmer & Wynetta Van De Berg	Paul & Deona Vande Berg	Mildred Vos	Les Wynja
Grant & Bonnie Van De Brake	Marion & Betty Vande Brake	Sally Vreugdenhill	Scott & Melanie Wynja
Lynn & Cindy Van De Brake	Gerald & Arlis Vande Garde	Mike & Linda Vrieze	Frank & Sheila Yender
Alice Van Dyke	Galen & Julie Vande Vegte	Alexis Waddingham	Christopher Youngers
Kaitlin Van Dyke	Brian Vande Zandschulp	Bill & Marcella Wagner	Lisa Youngers
Glenn & Marty Van Ekeren	Conrad Vande Zandschulp	Vernice Wahl	Jeffry Zemechel
Brent & Kristin Van Engen	Derek Vande Zandschulp	Arlene Walgenbach	John Zeutenhorst
John & Kae Van Engen	Harlan & Judy Vande Zandschulp	Bret Walinga	Sherrie Zeutenhorst
Les Van Engen	James & Patricia Vande Zandschulp	Allan Walker	Steve Zevenbergen
Bob & Rhonda Van Es	Stanley & Darlene Vander Aarde	Josh & Beth Waller	Robert & Lynette Ziegler
Keith & Jeannetta Van Gent	Dr. Lyle & Rachel Vander Broek	Joan Walsh	Gordon & Connie Zonnefeld
Dan & Sherri Van Gorp	Rev. Cliff & Barbara Vander Burgh	Mr. & Mrs. Douglas Walvoord	Kathleen Zylstra
Dave & Jo Van Gorp	Dr. Harlan & Diane Vander Griend	Alisa Walz-Flannigan	



# *Gifts in* **Memory**

Memorial gifts received from July 1, 2015 to June 30, 2016 were sent by friends and family members of the following people:

Jean Ahrenstorff	Ruth Schiphoff
Henry Bents	Bob Scholten
Eleanor Blankers	Bob Taylor
Agnes Bonestroo	Phil Templeman
Kenneth Brinkley	Donald Treimer
Don Collins	Ed Van Grootheest
Pete De Boer	Louetta Van Meekeren
Etta De Jongh	Wally Vander Hamm
Caroleen De Young	James Vander Molen
Ron Drenkow	Odean Vant Hul
Rose Dykstra	Wilmina Vant Hul
Barb Haack	Marlin Vetter
Jerry Halstenson	Lewis Vogel
Brent Hansen	Mark Voy
Arthur Henningsen	Pearl White
Jean IntVeld	
Jackie Kibbie-Williams	
Willis Kleinwolterink	
Erna Kooistra	
Bernie Magaril	
Curt Mc Clintic	
Margarie Menning	
Ray Mouw	
Beth Otting	
Arnold Pennings	
Alvin Petersen	
Travis Potter	
Doris Ruetten	

# Ways to Give

## Outright Gifts

Monetary donations given to Village Northwest Unlimited are used for purchase of equipment, remodeling, renovations, and program development. Your donation will directly benefit those we serve, providing purpose, privacy and dignity for all people.

## Memorial Gifts

The memory of the person you honor with a memorial gift to the Village will continue to live on through the lives of those who benefit from your gift. Gifts in memory are applied toward the Resident Needs Fund, and are made available to residents for the purchase of specific personal needs that they are not able to purchase on their own because of limited financial resources. We will, however, honor special requests, should you wish your memorial gift to be used for a specific need.

## Get Involved

---

### Volunteer

Village Northwest Unlimited has a wide variety of volunteer opportunities. Options include working in the Treasure Chest, volunteering with the Soles4Souls shoe collection, assisting maintenance or helping in one of the many program areas. Donation of your time and talents directly impacts the lives of the individuals we serve.

### Give Shoes

Shoes donated to Soles4Souls provides a work opportunity for residents of Village Northwest Unlimited. They sort footwear into specific categories and prepare shoes for shipment to Soles4Souls' global outreach distribution center. This partnership allows the individuals that we serve to give back to society by being able to provide shoes to those less fortunate around the world, and to be a part of improving another human being's life. You can deliver shoes to our processing center at: 105 N 18th Avenue Sheldon, IA 51201

### Life Income Gifts

Donors may transfer cash, securities, and/or real estate to Village Northwest Unlimited with the understanding that they, or their designated beneficiaries, will receive income for life or a term of years with Village Northwest Unlimited retaining the remainder.

### Life Insurance & Retirement Plan Assets

Donors may transfer life insurance policies to Village Northwest Unlimited as owner and beneficiary, or name the Village as the primary or secondary beneficiary under qualified retirement plans.

### Cash Securities & Real Estate

Gifts of cash, stocks, bonds, and/or land may be made outright or in installments over a period of years.

### Planned Gifts

In large part, Village Northwest's present endowment has been built from generous gifts from the estates of its benefactors.

- Bequest by will, irrevocable trust, or revocable trust
- Charitable gift annuity
- Charitable remainder trust
- Gift of residence or farm with retained life use
- Life insurance policy
- Retirement plan

### Donate Items to the Treasure Chest

The Village Treasure Chest is thrift store that relies on donations of clothes, furniture, home décor and more from the general public. Items are sold in the store, which is run primarily by volunteers, and proceeds are used to help fund the services we provide. Donations can be dropped off at 1979 Park Street in Sheldon, IA.

### Shop Village Businesses

The Village has three for-profit businesses: Northwest Produce, Fantasia and Village Treasure Chest. Proceeds from these businesses are used to fund the services VNU provides. You can enjoy coffee and shop for home décor, kitchen supplies and accessories at Fantasia; explore the endless variety of merchandise available at the Treasure Chest and purchase delicious, locally grown Norwest Produce tomatoes at area grocery stores all while supporting the Village mission.

## Gifts that won't Cost You a Dime

---

### Good Search/Good Shop

Good Search is an online search engine with a mission to share a percentage of their advertising revenue, about a penny per search, with nonprofit organizations selected by its users. Visit [www.goodsearch.com](http://www.goodsearch.com) and enter Village Northwest Unlimited as the charity you wish to support.

Hundreds of stores including Target, Gap, Best Buy and others have teamed with Good Shop and each time you order, you'll be supporting Village Northwest Unlimited. Visit [www.goodshop.com](http://www.goodshop.com) and enter Village Northwest Unlimited as the charity you wish to support.

### Amazon Smile

Amazon Smile offers the same diverse and convenient shopping experience as Amazon with a bonus of giving back while you shop. Simply go to [smile.amazon.com](http://smile.amazon.com) and select Village Northwest Unlimited as the organization you would like to support. You can sign in using your existing Amazon account. Then, any time you make a purchase on Amazon Smile, Amazon will donate to Village Northwest Unlimited.





## **Village Northwest Unlimited**

330 Village Circle . Sheldon, IA 51201

Ph. (712)324-4873 . Fax (712)324-4877

[www.villagenorthwest.org](http://www.villagenorthwest.org)



*Find us on Facebook, follow us on Twitter, and check out our website!*